

# Therma Sheet

ROOFING UNDERLAYMENT



## KEY ADVANTAGES

**THERMAL PROTECTION AND COMPLETE MOISTURE BARRIER**

**INCREASED R-VALUES IN SYSTEMS WITH AN AIRSPACE**

**SUBSTANTIALLY REDUCED ATTIC TEMPERATURES**

**CLASS-A FIRE RATED**

**DOES NOT "SUPER HEAT" ROOFING MATERIALS**

*Qualifies as a "Cool Roof" alternative under the California Residential Building Code Standards*

*LOW-E® Reflective Insulation is manufactured by Environmentally Safe Products, Inc. (ESP)*

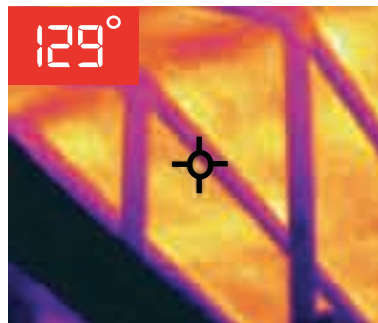
8/1/11

## Reflects 97% of Radiant Energy

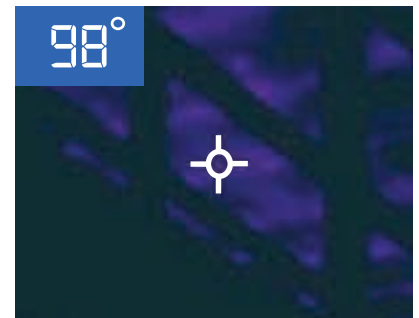
- Metal roofing
- Concrete tile
- Stone coated steel
- Clay tile



**Reduced temperature at plywood on a cement tile roof over 30 degrees**



*Before Therma Sheet*



*After Therma Sheet*

*Even without an airspace, LOW-E® creates a thermal break and reduced temperatures on the underside of these roofing systems, when installed either under or on top of felt.*

- Composite shingles
- Standing seam metal
- Single & Multi-ply

Refer to California Building Code Standards Title 24 in determining which LOW-E Therma Sheet meets building code requirements per zone.